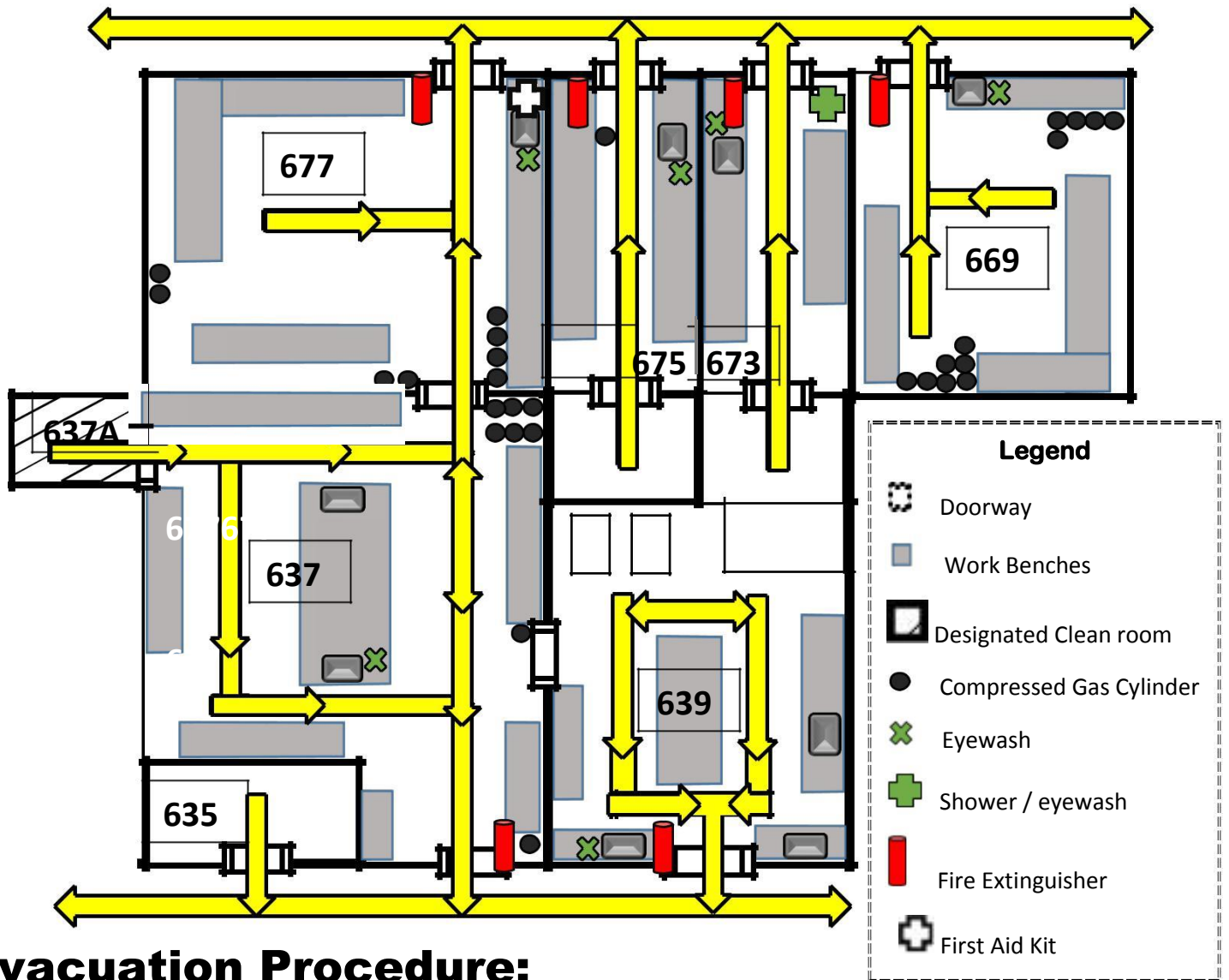


Emergency Evacuation Plan & Emergency Equipment Locator



Evacuation Procedure:

1. Walk to the nearest exit as shown. If it is blocked use alternate exit
DO NOT USE ELEVATORS
2. Assist Persons with special needs (call ASU police at 9-1-1)
3. Notify emergency crews if someone is trapped in the building.
4. Gather on the lawn between the Goldwater center and university drive, north of the building. Lab supervisor will take account of all personnel so be sure to check in or else it will be assumed you are still inside.